

Macdonald Commercial Real Estate Services Ltd.

## equestrian facility for lease

6918 -232<sup>nd</sup> street

Langley, BC

Canada



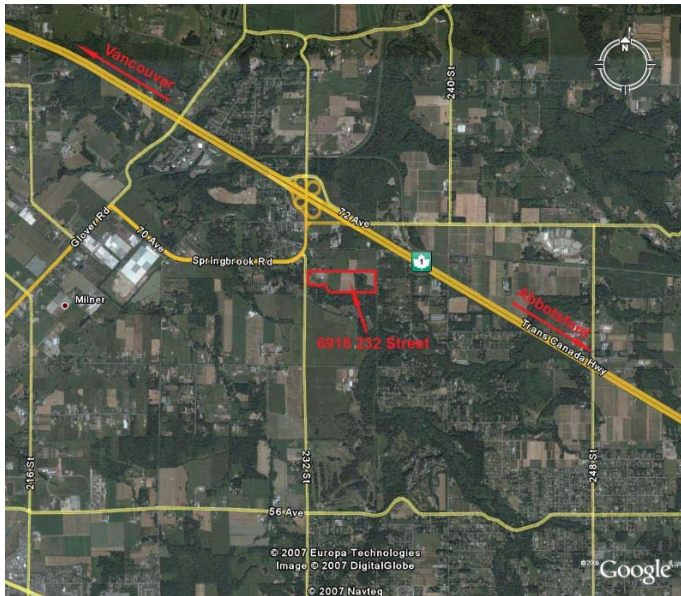
exclusive agent

**Graeme Erickson**  
604-714-4755 (direct line)



**6918 – 232nd Street  
Langley, British Columbia  
Canada**

location: Salmon River Valley  
site: 42 acres (approx.)  
rental rate: \$3500 per month gross. Utilities and insurance not included.  
term: 5 years preferred.  
occupancy: Immediate



features: This property is fully developed with a 19 stall stable, indoor riding-arena, hay barn, paddocks and acres of open range. Two fully-serviced office buildings accommodate administrative and assembly facilities for riders and clients.  
P2-L Zoning allows for Community Care Uses. Other uses are possible subject to regulatory approvals.  
The property is located just off of the 232<sup>nd</sup> Street exit from Highway 1, less than an hour's drive from Downtown Vancouver and just 20 minutes from Abbotsford International Airport.

exclusive agent:

**Graeme Erickson**  
Macdonald Commercial R.E.S. Ltd.  
Suite 301 – 1770 West 7<sup>th</sup> Avenue  
Vancouver, BC Canada V6J 4Y6  
email: mail@realservicedirect.com

E&OE: The information contained herein was obtained from sources deemed reliable and while thought to be correct is not guaranteed by Macdonald Commercial and is subject to conditions existing at the time of transaction and to inspection by the lessee. Lease of the property is subject to prior sale, lease, withdrawal, or changes without notice. 02/09